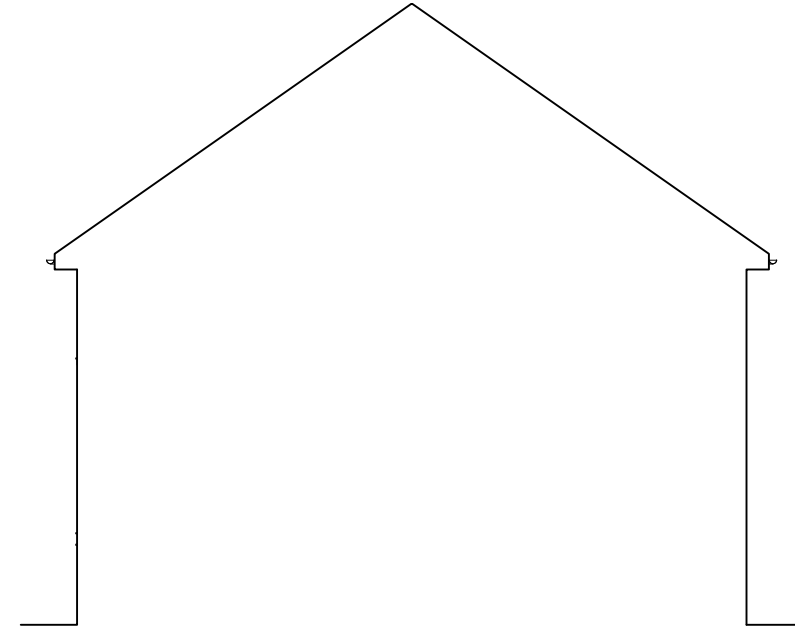


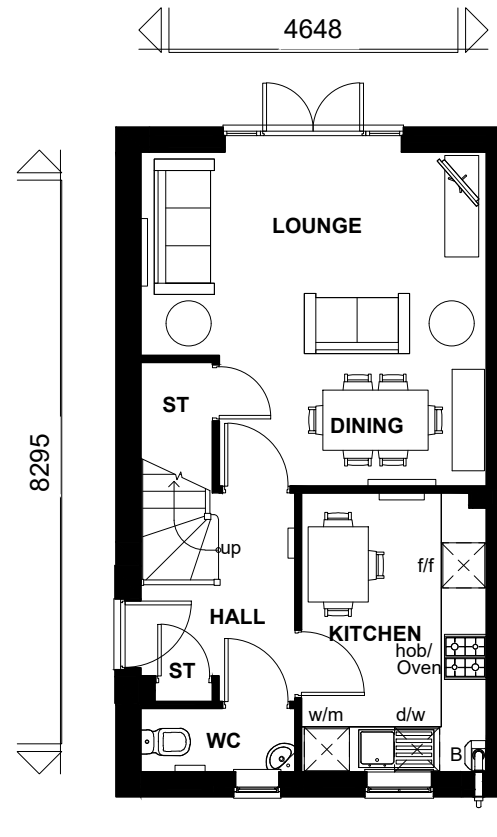
**FRONT ELEVATION**



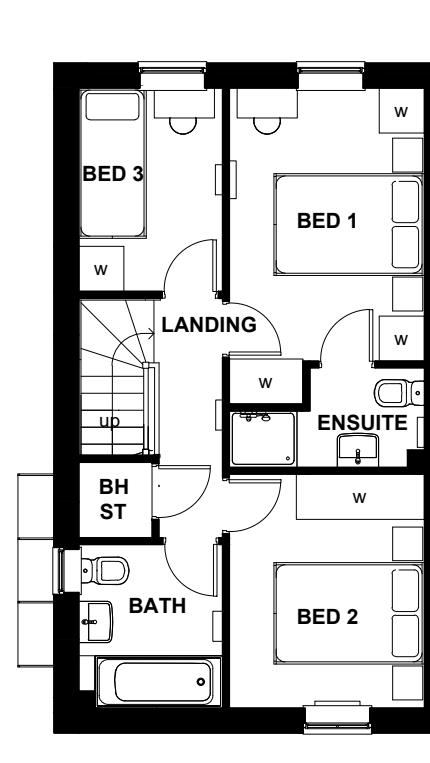
**REAR ELEVATION**



**SIDE ELEVATION**



**GROUND FLOOR**



**FIRST FLOOR**



**SIDE ELEVATION**



**BARRATT**  
DEVELOPMENTS PLC

Planning	
Rev	Description
A	Refer to Data Sheet for full revision description
B	Refer to Data Sheet for full revision description
C	Refer to Data Sheet for full revision description

Rev	Date
A	Oct 2016
B	Sept 2017
C	Nov 2018

**WARNING TO HOUSE-PURCHASERS**  
Buyers are warned that this is a working drawing and the contents of this drawing may be subject to change during the progress of the build process. The layout, form, content, and dimensions specified are included for general guidance only. Finishes or features shown may alter in respect of the individual properties. Whilst we make every effort to ensure our drawings are up to date there may from time to time be an unavoidable delay in updating these due to changes in site or other circumstances. It is the responsibility of the purchaser to check whether any alterations have been made to this drawing. The contents of this drawing do not constitute a contract, part of any contract or warranty unless specifically incorporated into the contract. They should not be relied upon for the purposes of entering into a contract to purchase any property.

Floor Area: 830 ft<sup>2</sup>/77.1 m<sup>2</sup>

Sales Name: Maidstone Classic (End-Side)

House Type Code: BMAI 0SCE

Spec: AMBASSADOR Drawing No: 01

Drawn: GDT

Date: April 2016

Checked: GDT

Scale: 1 : 100 @A3