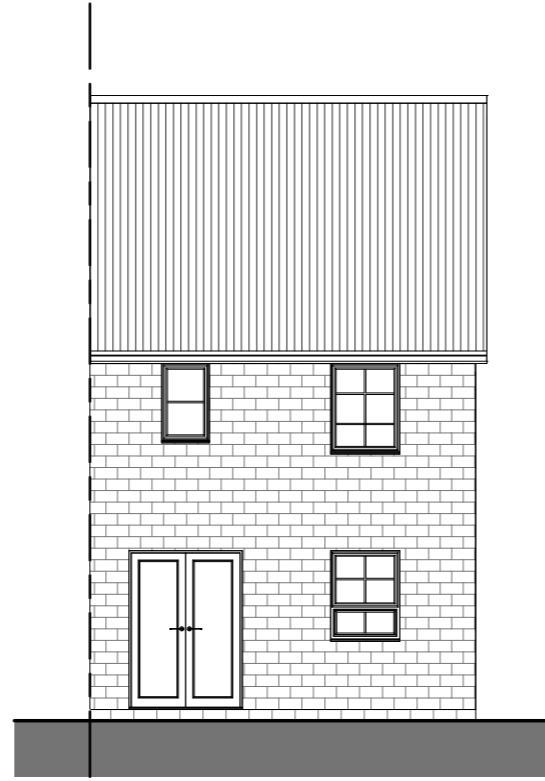
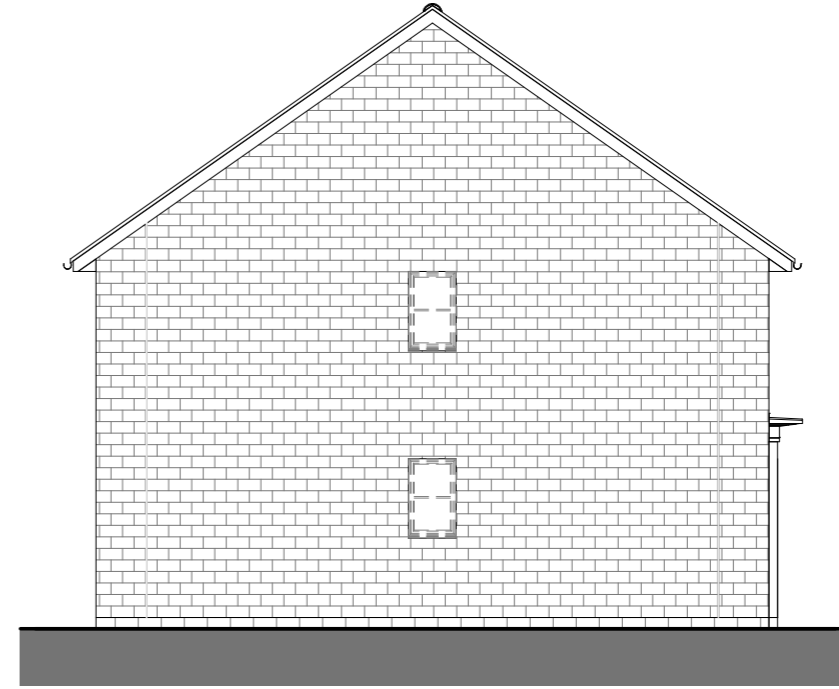


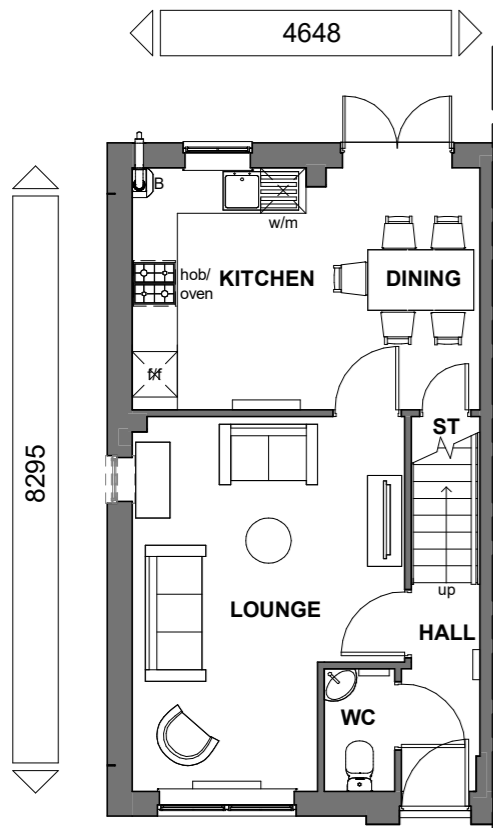
**FRONT ELEVATION**



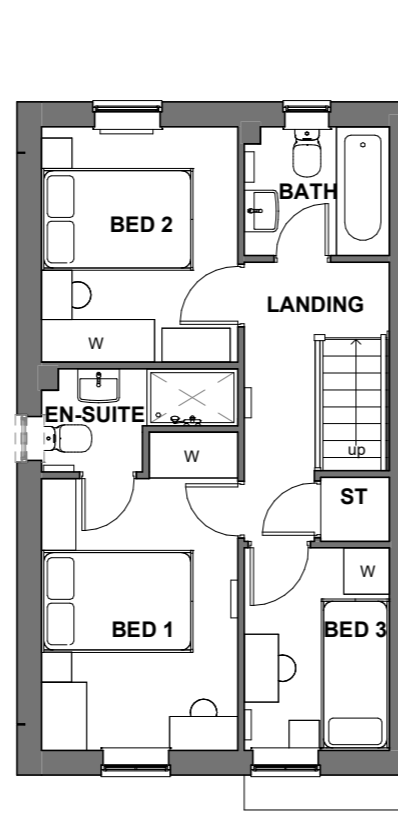
**REAR ELEVATION**



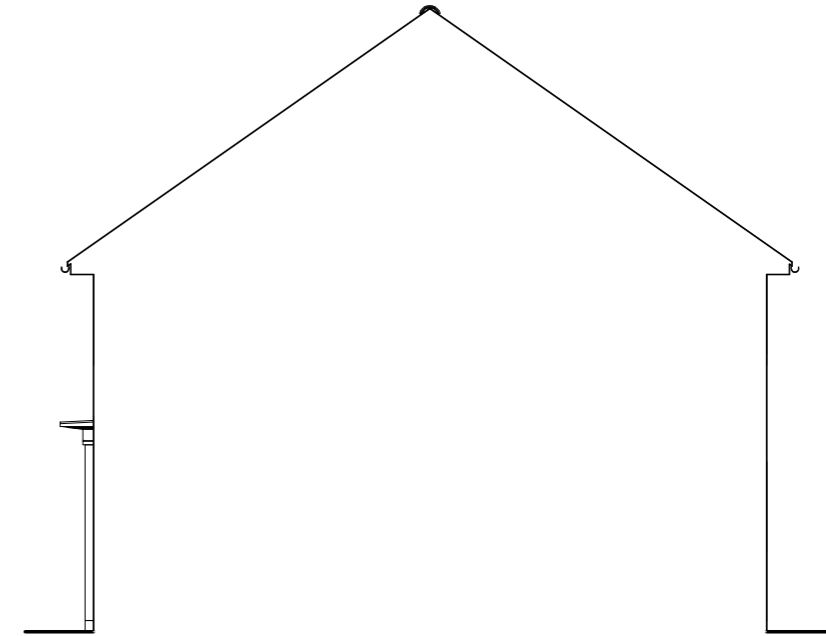
**SIDE ELEVATION**



**GROUND FLOOR**



**FIRST FLOOR**



**SIDE ELEVATION**

Floor Area: 330 ft<sup>2</sup> / 77.1 m<sup>2</sup>

Sales Name: Maidstone Classic (End)

House Type Code: BMAI 56SE

Spec: STATESMAN Drawing No: 01

Date: May 2018

Drawn: AU

Checked:

Scale: 1 : 100 @A3

**WARNING TO HOUSE-PURCHASERS**

Buyers are warned that this is a working drawing and the contents of this drawing may be subject to change during the progress of the build process. The layout, form, content, and dimensions specified are included for general guidance only. Finishes or features shown may alter in respect of the individual properties. Whilst we make every effort to ensure our drawings are up to date there may from time to time be an unavoidable delay in updating these due to changes in regulations and/or re-planning. Purchasers are advised to check with Sales Adviser whether any alterations have been made to this drawing. The contents of this drawing do not constitute a contract, part of any contract or warranty unless specifically incorporated into the contract. They should not be relied upon for the purposes of entering into a contract to purchase any property.

**Planning**

Rev	Description	Date
A	Refer to Data Sheet for full revision description	Oct 2016
B	Refer to Data Sheet for full revision description	Sep 2017
C	Refer to Data Sheet for full revision description	Mar 2018



**BARRATT**  
DEVELOPMENTS PLC