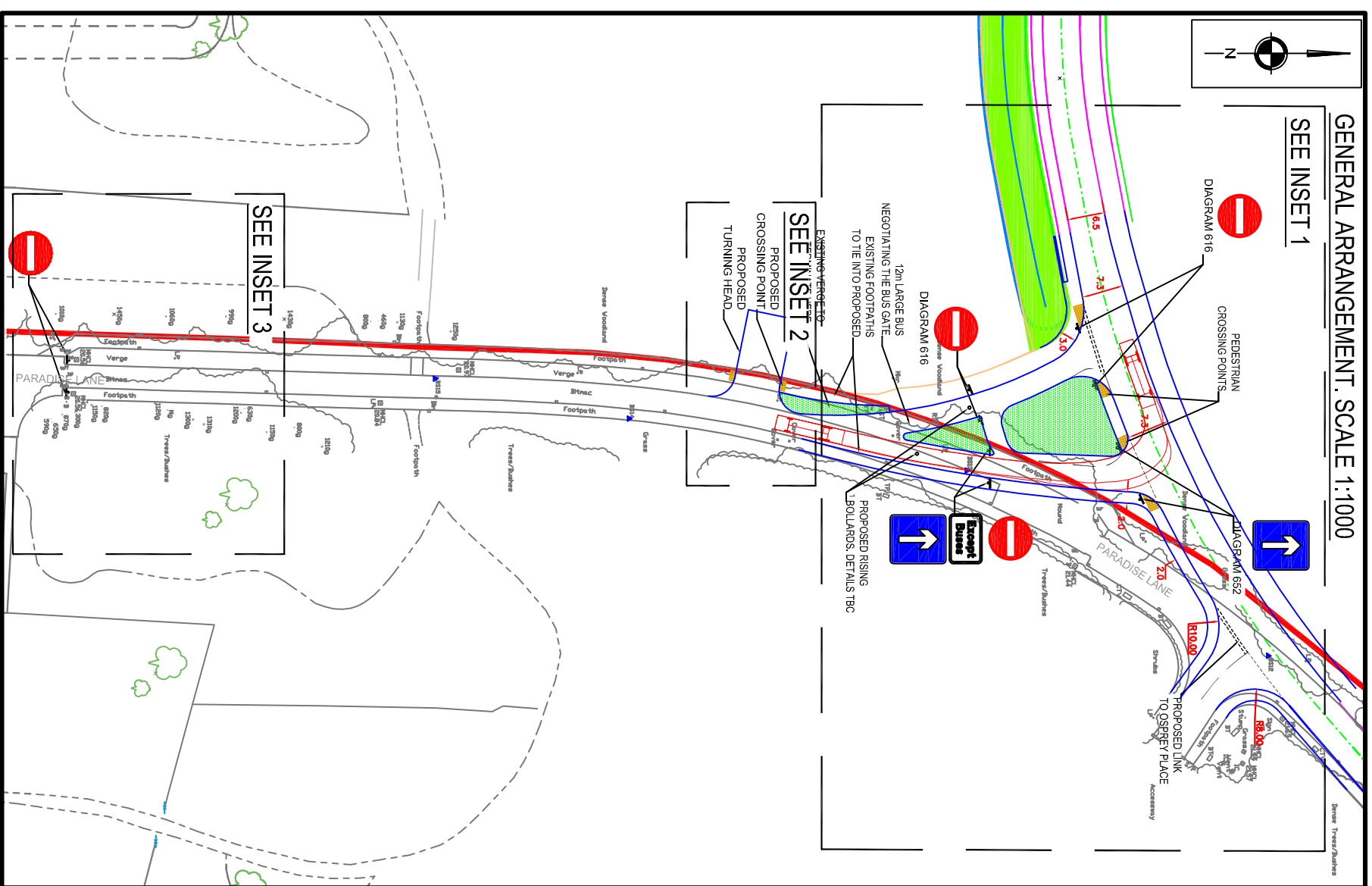
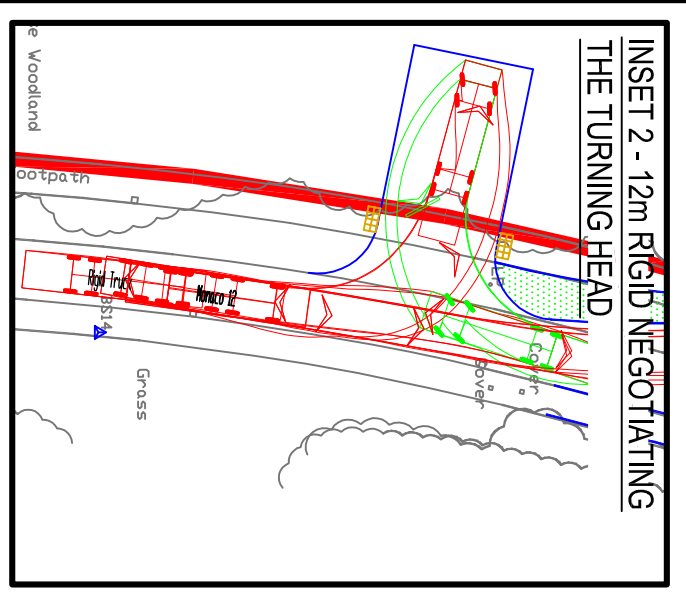
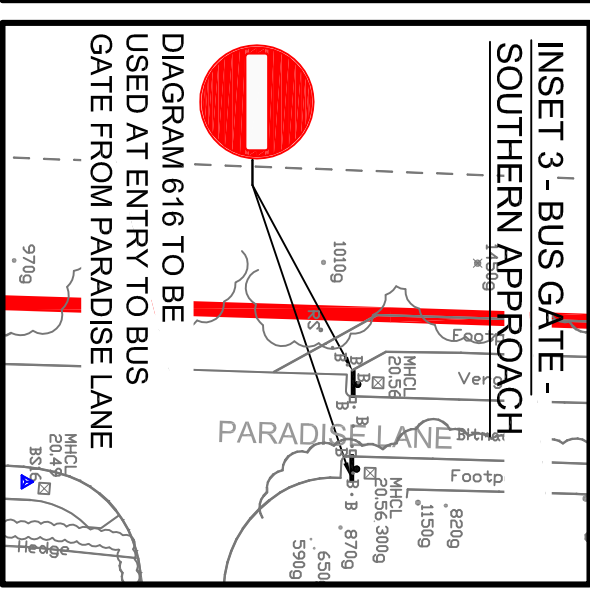
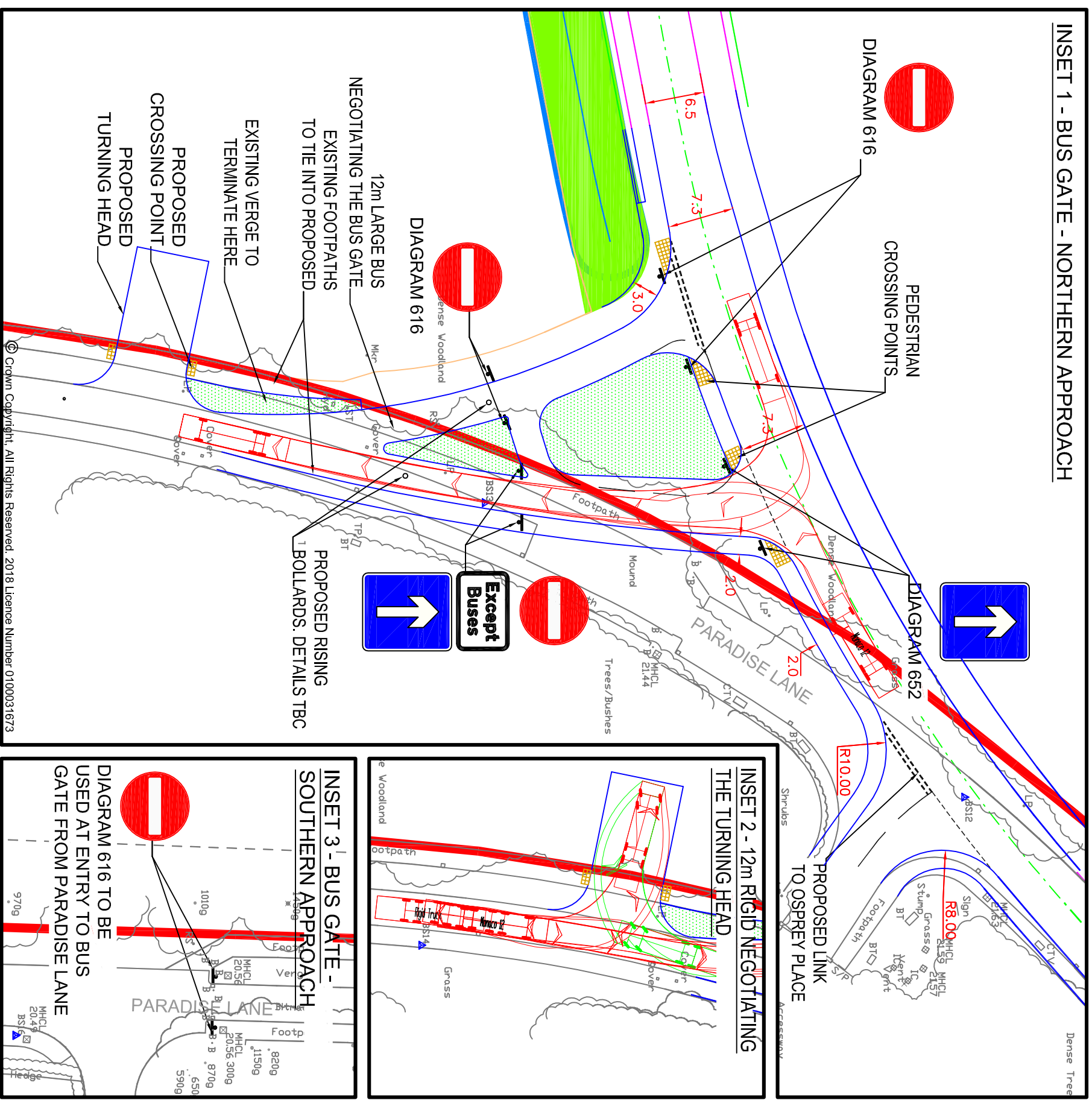


GENERAL ARRANGEMENT. SCALE 1:1000



INSET 1 - BUS GATE - NORTHERN APPROACH



Scale	1:500 @ A3 UNLESS STATED	By	BA	Rev	Description	Date	By	Drawing No.
Date	08.09.2017	Checked	PT	F2	-GENERAL ARRANGEMENT UPDATED TO CREATE A LESS TRADITIONAL JUNCTION ARRANGEMENT.	15.05.18	BA	SCP/15043/F21
Approved/Unapproved	-	Status	PLANNING	G2	-KERB LINES OPPOSITE BUS GATE JUNCTION UPDATED TO THE INTO 6.5m WIDE ACCESS ROAD. EXTENTS OF S278 SHOWN ON PLAN.	30.07.18	BA	Revision G2

Client: **BDW TRADING LTD AND PROPERTY CAPITAL PLC**

Drawing Title: **PROPOSED BUS GATE (LONG TERM BUS STRATEGY - SOUTHBOUND MOVEMENTS)**

Transportation Planning : Infrastructure Design

Colwyn Chambers, 19 York Street, Manchester, M2 3BA, Tel 0161 832 4400.  
www.scptransport.co.uk, Email info@scptransport.co.uk